

Rockin'

SOUTH FLORIDA

BECOME A SPONSOR

SATURDAY, APRIL 29, 2023

**ANNUAL FUNDRAISING GALA
AT CORAL GABLES GOLF & COUNTRY CLUB**



BENEFITTING



**Children's
Bereavement
Center**

Celebrating 24 Years

WWW.CBCROCKIN.ORG



**CBC PROVIDES FREE GRIEF SUPPORT GROUPS FOR
CHILDREN, TEENS & ADULTS IN SOUTH FLORIDA**

CBCROCKIN.ORG | CHILDBEREAVEMENT.ORG



Children's Bereavement Center

FREE GRIEF SUPPORT GROUPS FOR CHILDREN, TEENS & ADULTS

EXECUTIVE DIRECTOR
Debra Albo-Steiger, LCSW

Dear Supporter,

SENIOR ADVISOR
Mindy Cassel, PhD

EXECUTIVE BOARD
Alexander Admire
Feras Ahmed
Julie Fishman Berkowitz
Chira Cassel, MAPP
Mindy Cassel, PhD
Maggie Fader, MD
Linda Frazier
Natalie Garcia
Edward Golden
Melissa Goldman
Elizabeth Leight, PhD
Ashleigh Lindenauer
Victor Oquendo
Jonathan Osborne
Lindsey Parker
Sandra Seals
Daniel Simon
Terry Smallhorne
Kyla Thorpe

We invite you to join us as a Sponsor for Rockin' South Florida on Saturday, April 29, 2023 at the beautiful, newly renovated Coral Gables Golf & Country Club to celebrate Children Bereavement Center's services across South Florida's communities. The funding you provide will support our FREE weekly grief support groups for children, teens and adults. Our services impact thousands of lives, providing resources, professional trainings and programs to help grieving families in their time of need.

Join us for our annual fundraiser which will be sure to drive attendees to have a good time. Rockin' has a tradition of great food, music, dessert and camaraderies as we recognize CBC's vital work offered year-round. This year, we plan on celebrating with around 450 attendees, all of whom are Champions for CBC.

Since 1999, CBC has helped grieving children and families and the need continues to be more important now than ever before. We have been able to serve the community uninterrupted throughout the COVID-19 pandemic, increased trainings and resources for those grieving and expanded grief support groups. Because of this, we hope you will consider a sponsorship in support of the CBC. Sponsors and auction donors will be acknowledged before, during and after Rockin' and through our marketing materials and online platforms.

You can help us change the course of lives after loss by providing support when people need it most. In all our years of service, we've learned that grief is meant to be shared. CBC offers that place - where children, teens and adults find camaraderie, confidence and hope for a life after loss.

We look forward to seeing you at Rockin' South Florida!

With gratitude,

Debra Albo-Steiger, LCSW
Chief Executive Officer

Address: 6619 South Dixie Highway, #302, Miami, FL 33143 | **Phone:** 888-988-5438 | **www.childbereavement.org**

The Children's Bereavement Center (CBC) is a 501(c)(3) non-profit organization (FL Registration #CH10400) and contributions are tax-deductible under IRS regulations. A COPY OF THE OFFICIAL REGISTRATION AND FINANCIAL INFORMATION MAY BE OBTAINED FROM THE DIVISION OF CONSUMER SERVICES BY CALLING TOLL-FREE (800-435-7352) WITHIN THE STATE. REGISTRATION DOES NOT IMPLY ENDORSEMENT, APPROVAL, OR RECOMMENDATION BY THE STATE.

Celebrating Our Service

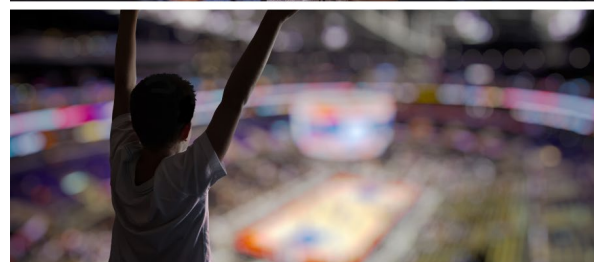
Rockin' South Florida

Join us at Rockin' South Florida on Saturday, April 29th, 2023 as we celebrate the thousands of lives CBC has impacted by providing free grief support groups after the loss of a loved one.

We invite you to join us at the newly renovated and stunning Coral Gables Golf & Country Club for our annual event benefitting Children's Bereavement Center.

Highlights of the evening include unique auction items, music, dancing, delicious dinner and dessert! We will also honor Champions of CBC who are leaders in the community.

The biggest impact attendees and sponsors can make at Rockin' is to Sponsor-A-Child. For every \$1,500, a child can attend CBC grief support groups for an entire year for free. Help us support more grieving children and families with the tools and support they need.



Rockin' Demographics

Rockin' events attract around 450 philanthropic guests who enjoy travel, fine dining, jewelry, unique experiences and luxury vehicles.



"I thought I was coming to CBC to support my daughter, but I didn't realize how much I needed it. Groups opened the door for healing."
- Former CBC participant



Average
Age



Guests
Attending



50% Men
50% Women

Living in | Miami Beach • Coral Gables • Coconut Grove
• Fisher Island • Ft Lauderdale • Boca Raton

Leading in | Law • Medicine • Real Estate
• Banking • Design • Business



Community Impact

For over 24 years, the Children's Bereavement Center has served our South Florida community offering free support groups for children, teens and adults who have lost a loved one. The need and demand for grief support, resources and training are at an all-time high. CBC is being leaned on by the entire South Florida region and beyond. Your sponsorship will support:

- FREE Grief Support Groups for all ages (4+)
- Adult support groups in English and Spanish
- Grief resources in English, Spanish and Creole
- Dedicated Perinatal & Infant Loss Support Groups
- Community education series with a focus on grief in historically marginalized communities through free online Lunch and Learns
- Grief-informed training and self-care resources for educators, healthcare workers and community professionals
- CBC-in-the-Community to provide grief psycho-education
- Ongoing evaluation and grief support research

Who We Serve

3,757

hours of FREE grief support group services

425

peer grief support groups per year

10,000+

professionals trained each year

3+

counties served

1,000+

volunteer hours donated

24

years of service to South Florida

Participant Demographics

African American
25.3%

Other
3%

Caucasian
23.2%

Multiracial
3%

Hispanic/Latino
45.5%

Of those who reported, CBC's largest ethnic community is Hispanic/Latino

>\$75,000
22.2%

\$51,000 - \$75,000
17.2%

\$26,000 - \$50,000
29.3%

\$10,000 - \$25,000
31.3%

Of those who reported, the majority of CBC participants have an annual household income of \$10,000 - \$25,000

Grief is a National Public Health Issue:

1.5 Million

children in the U.S. are living in a single-parent household because of the death of a parent.

1 in 12

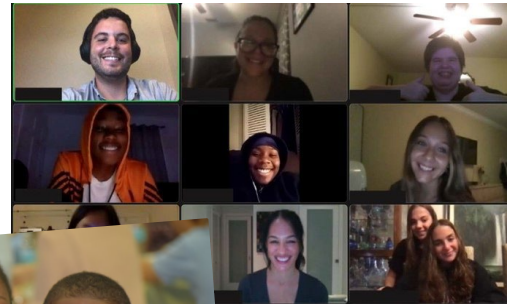
children in Florida will experience the death of a parent or sibling by age 18.

up to 1/3

of those directly affected by a major loss will suffer detrimental effects on physical or mental health or both.

278,000+

children under 18 lost a primary or secondary caregiver to COVID-19



Six Reasons to Sponsor



1.

Brand Exposure

Unite with members of the South Florida community who are driven by Children's Bereavement Center's mission to provide FREE grief support groups for children, teens and adults.

2.

Online Engagement

Reach approximately 20,000 people per month from South Florida through social media (9,500+ monthly reach), email marketing (8,500+ subscribers) and our website (1,500+ unique monthly visitors).

3.

Corporate Social Responsibility

Grief is a national public health issue: 1 in 5 children experience loss before they graduate high school.

4.

Support Your Local Community

Proceeds from this event will help hundreds of children, teens and adults in South Florida attend grief support groups completely FREE.

5.

Memorialization

With your sponsorship, memorialize a colleague, friend or family member to honor their life.

6.

Corporate Engagement

This year's event provides an opportunity to engage employees or business associates to connect and strengthen team bonds through a shared experience.





Sponsor Benefits

Ask us about customizable sponsorship opportunities. Organizations all market themselves differently and may have unique goals. If you don't see something listed and want to tailor a sponsorship to fit your brand, let's talk!

Other unique sponsorship opportunities:
[Photo Booth](#) | [Entertainment](#) | [Recognition Gifts](#) | [Honoree Awards](#)

Sponsorship Benefit	Presenting \$30,000 (1 available)	Speedin' \$15,000	Rockin' \$10,000	Rollin' \$5,000
Sponsor-A-Child Donation for one (1) year at CBC	15 Children	6 Children	4 Children	2 Children
Reserved Tickets to Rockin' South Florida	30 Tickets (3 lg tables)	20 Tickets (2 lg tables)	16 Tickets (2 sm tables)	10 Tickets (1 lg table)
Recognition on event program (Deadline March 15, 2023)	Presented by Placement	Premier Placement	Prominent Placement	✓
Listed on CBC website Donor page thru 12/31/23	✓	✓	✓	✓
Recognition in event video and signage	Logo	Logo	Logo	Logo
Recognition on Rockin' website and event E-blasts	Premier Placement	Premier Placement	Prominent Placement	✓
Recognition on digital platform silent auction ad space	✓	✓	✓	✓
Listed in Rockin' Press Releases	✓ (incl. quote)	✓ (incl. quote)	✓	✓
Recognition on Social Media	✓	✓	✓	✓
Recognition at CBC Lunch & Learn or Conversation with CBC online programs	4 programs	2 programs	1 program	
VIP Treatment: Table placement, Champagne bottle service and expedited Valet	✓	✓		

To encourage donations to the Sponsor-A-Child campaign, CBC is working on a match fund for Rockin' South Florida.

Contact Kim Bentkover, kim@childbereavement.org or (305) 423-6001 for details.



Sponsor Agreement



I would like to be a Sponsor of Rockin'!

- ☐ Presenting Sponsor \$30,000 (1 available)
- ☐ Platinum Sponsor \$15,000
- ☐ Gold Sponsor \$10,000
- ☐ Silver Sponsor \$5,000
- ☐ Customized Sponsorship

TOTAL = _____

Annual Gala Benefitting Children's Bereavement Center

Company/Individual Name: _____

Contact Name: _____

Address: _____

City, State & Zip: _____

Phone: _____ Fax: _____

Email: _____

Contact Kim@childbereavement.org with questions and to send high resolution logo for inclusion as a sponsor.

Please make your check payable to: Children's Bereavement Center

Checks may be mailed with this form to:

Children's Bereavement Center
Attn: Elaine Webb
6619 South Dixie Highway, #302
Miami, FL 33143

Complete this form with credit card information and e-mail to our Office Manager Elaine Webb elaine@childbereavement.org or call 305-668-6282 to complete over the phone.

Credit Card: _____

Expiration Date: _____ Code: _____

Signature: _____ Date: _____

A letter acknowledging your donation will be forthcoming. We are delighted you are a sponsor!

Thank you for your service to the community by helping grieving children and families!

The Children's Bereavement Center (CBC) is a 501(c)(3) non-profit organization (FL Registration #CH10400) and contributions are tax-deductible under IRS regulations. A COPY OF THE OFFICIAL REGISTRATION AND FINANCIAL INFORMATION MAY BE OBTAINED FROM THE DIVISION OF CONSUMER SERVICES BY CALLING TOLL-FREE (800-435-7352) WITHIN THE STATE. REGISTRATION DOES NOT IMPLY ENDORSEMENT, APPROVAL, OR RECOMMENDATION BY THE STATE.

